

STYLED IN ITALY. PROUDLY AMERICAN.

FRAY



atlas concorde

USA



welcome

FRAY

Warmth and elegance of fabric are enriched by the appeal of used and reused materials that are perfectly worn. Thanks to a complete and modern color palette and a full range of trim pieces and decors, this fabric gives life to environments that convey a total feeling of comfort.



FRAY

Fray White 12^{3/8}"x22^{1/2}" - 31.5x57 cm

Fray Gray Mosaic 11^{3/4}"x11^{3/4}" - 30x30 cm

Fray Gray 23^{5/8}"x23^{5/8}" - 60x60 cm

COLORED BODY PORCELAIN STONEWARE

FLOOR

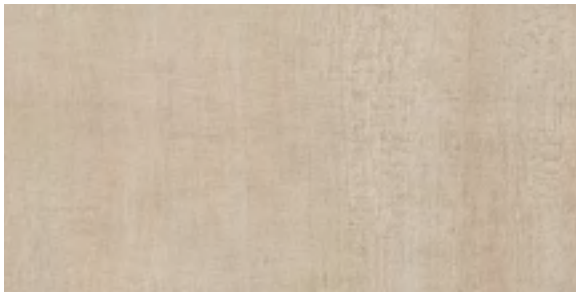
WALL



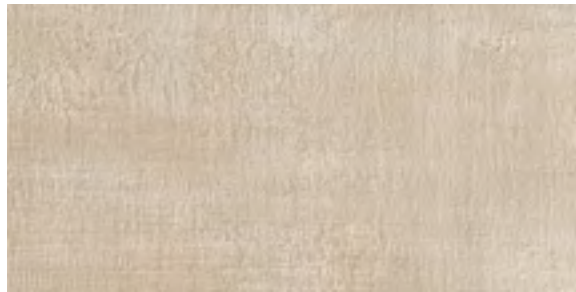
White



White



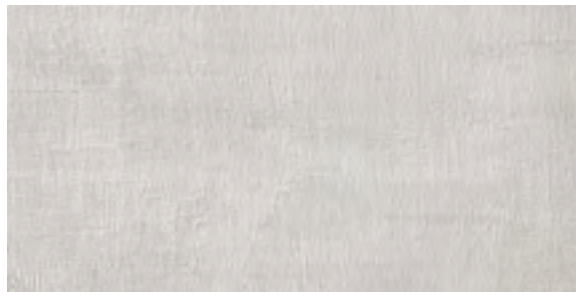
Sand



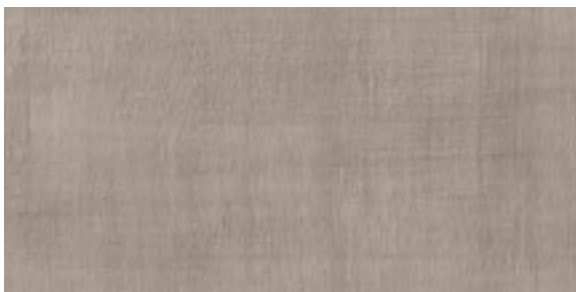
Sand



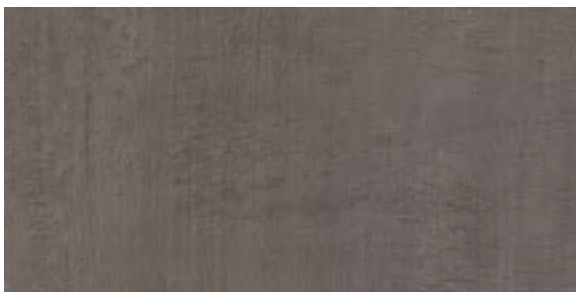
Pearl



Pearl



Gray



Smoke

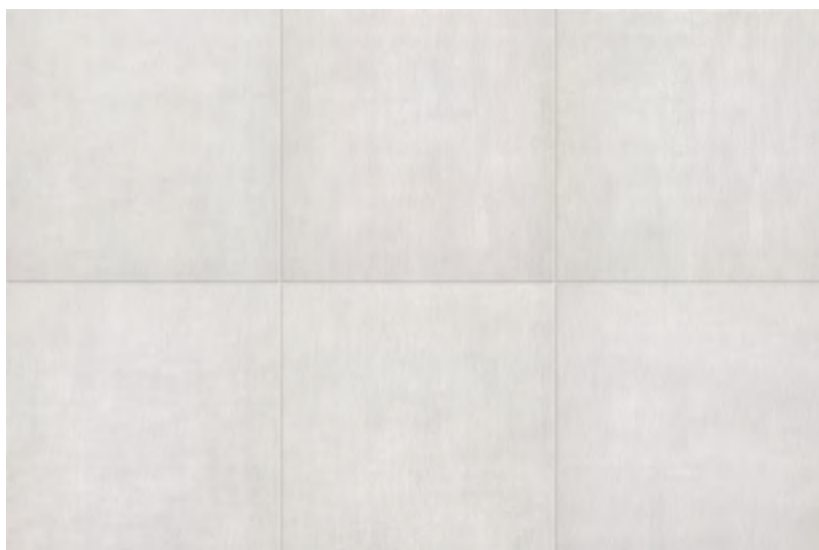


FRAY

Fray Gray Mosaic $11^{3/4}'' \times 11^{3/4}''$ - 30x30 cm
Fray Gray $23^{5/8}'' \times 23^{5/8}''$ - 60x60 cm

FRAY

COLORED BODY PORCELAIN STONEWARE



White



Sand



Pearl



Gray



Smoke

FRAY

COLORED BODY PORCELAIN STONEWARE



FRAY

Fray Pearl Bullnose 3"x24" - 7.2x60 cm
Fray Pearl 11^{3/4}"x23^{5/8}" - 30x60 cm

UNIFORM APPEARANCE
V1

Compliant with standards ANSI A137.1-2012



FRAY

Fray Smoke 23^{5/8}" x 23^{5/8}" - 60x60 cm



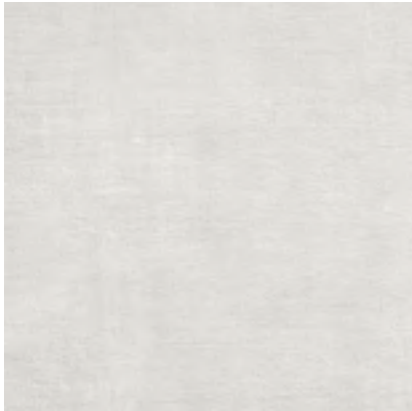
FRAY

SIZE - THICKNESS

11^{3/4}" x 23^{5/8}" - 30x60 cm / 23^{5/8}" x 23^{5/8}" - 60x60 cm ✂ 9 mm

FINISH

MATTE



FRAY White
23^{5/8}" x 23^{5/8}" - 60x60 cm - Rectified



FRAY Sand
23^{5/8}" x 23^{5/8}" - 60x60 cm - Rectified



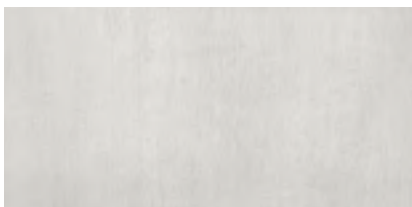
FRAY Pearl
23^{5/8}" x 23^{5/8}" - 60x60 cm - Rectified



FRAY Gray
23^{5/8}" x 23^{5/8}" - 60x60 cm - Rectified



FRAY Smoke
23^{5/8}" x 23^{5/8}" - 60x60 cm - Rectified



FRAY White
11^{3/4}" x 23^{5/8}" - 30x60 cm



FRAY Sand
11^{3/4}" x 23^{5/8}" - 30x60 cm



FRAY Pearl
11^{3/4}" x 23^{5/8}" - 30x60 cm



FRAY Gray
11^{3/4}" x 23^{5/8}" - 30x60 cm



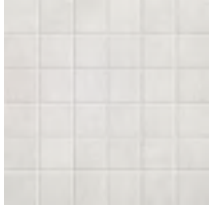
FRAY Smoke
11^{3/4}" x 23^{5/8}" - 30x60 cm



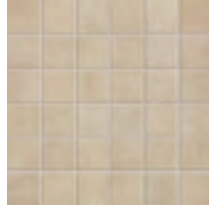
Compliant with standards ANSI A137.1-2012



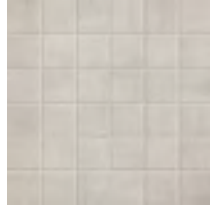
MOSAICS



FRAY White Mosaic
11^{3/4}"x11^{3/4}" - 30x30 cm
(Mosaic 2"x2")



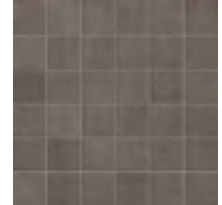
FRAY Sand Mosaic
11^{3/4}"x11^{3/4}" - 30x30 cm
(Mosaic 2"x2")



FRAY Pearl Mosaic
11^{3/4}"x11^{3/4}" - 30x30 cm
(Mosaic 2"x2")



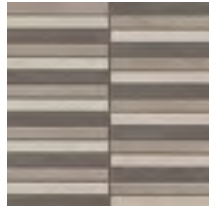
FRAY Gray Mosaic
11^{3/4}"x11^{3/4}" - 30x30 cm
(Mosaic 2"x2")



FRAY Smoke Mosaic
11^{3/4}"x11^{3/4}" - 30x30 cm
(Mosaic 2"x2")



FRAY Tatami Warm *
11^{3/4}"x11^{3/4}" - 30x30 cm
(Tatami Mosaic 1"x6")



FRAY Tatami Cold *
11^{3/4}"x11^{3/4}" - 30x30 cm
(Tatami Mosaic 1"x6")

* Mixed mosaic, available in Warm (White, Sand, Pearl) and Cold (Pearl, Gray, Smoke)

COORDINATING TRIMS

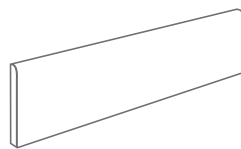
FRAY White

FRAY Sand

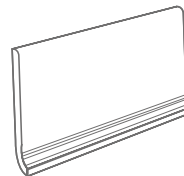
FRAY Pearl

FRAY Gray

FRAY Smoke



Bullnose
3"x 24" - 7.2x60 cm



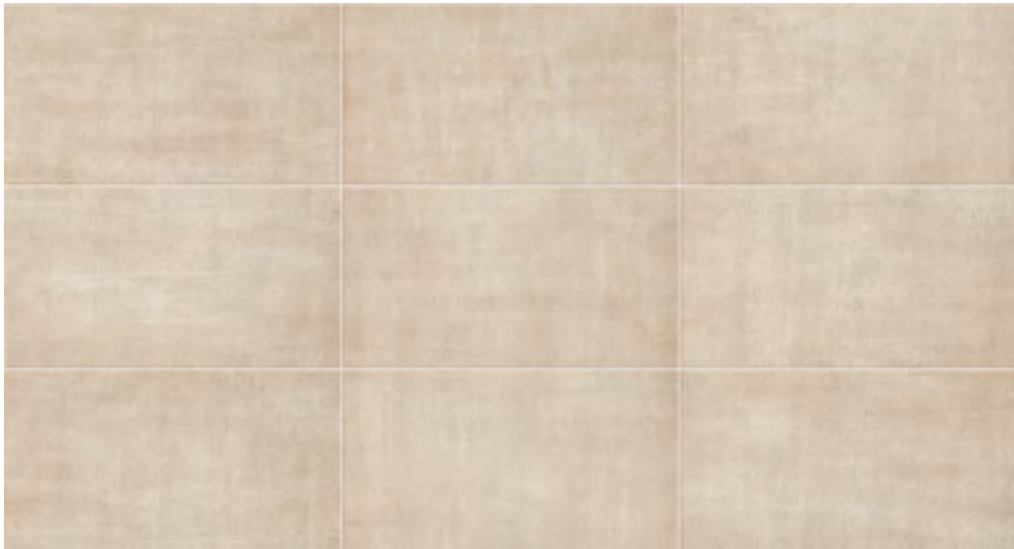
Cove base
6"x12" - 15x30 cm

FRAY

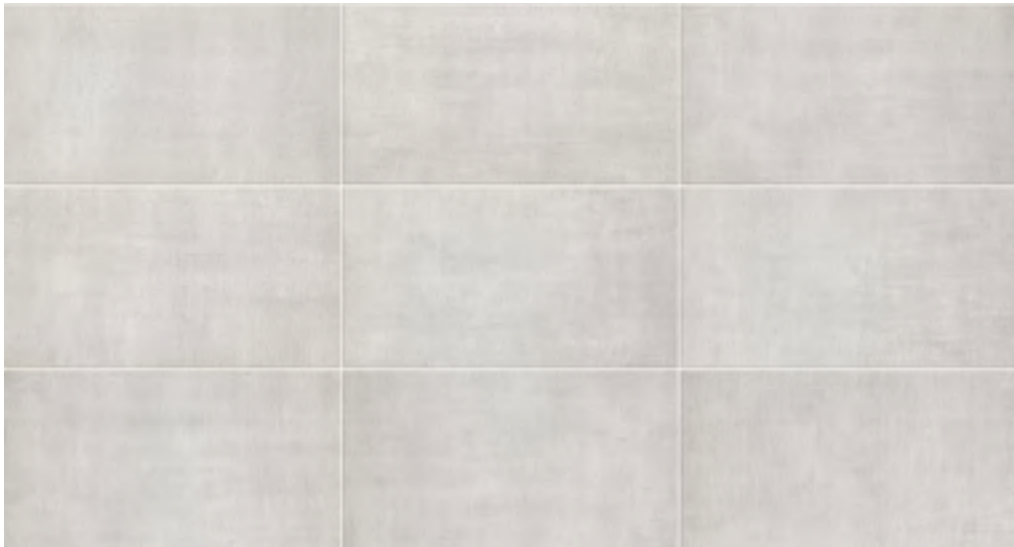
WHITE BODY WALL TILES



White



Sand



Pearl



FRAY

Fray White $12\frac{3}{8}'' \times 22\frac{1}{2}''$ - 31.5x57 cm

Fray Tatami Warm $11\frac{3}{4}'' \times 11\frac{3}{4}''$ - 30x30 cm

Fray Stripe Warm $12\frac{3}{8}'' \times 22\frac{1}{2}''$ - 31.5x57 cm

FRAY

WHITE BODY WALL TILES



FRAY

Fray Pearl Mosaic 12" x 12" - 30.5 x 30.5 cm

Fray Pearl Wall Bullnose 2" x 12^{3/8}" - 5 x 31.5 cm

Fray White 11^{3/4}" x 23^{5/8}" - 30 x 60 cm



Compliant with standards ANSI A137.1-2012



FRAY

Fray White $12\frac{3}{8}'' \times 22\frac{1}{2}''$ - 31.5x57 cm
Fray Tatami Warm $11\frac{3}{4}'' \times 11\frac{3}{4}''$ - 30x30 cm
Fray Stripe Warm $12\frac{3}{8}'' \times 22\frac{1}{2}''$ - 31.5x57 cm
Fray Sand $11\frac{3}{4}'' \times 23\frac{5}{8}''$ - 30x60 cm



FRAY

SIZE - THICKNESS | 12 ^{3/8}" x 22 ^{1/2}" - 31.5x57 cm ✂ 8.5 mm FINISH | MATTE



FRAY

Fray Pearl Mosaic 12" x 12" - 30.5x30.5 cm
Fray Pearl Wall Bullnose 2" x 12 ^{3/8}" - 5x31.5 cm



UNIFORM APPEARANCE

V1

Compliant with standards ANSI A137.1-2012



FRAY White
12 3/8" x 22 1/2" - 31.5x57 cm



FRAY Sand
12 3/8" x 22 1/2" - 31.5x57 cm



FRAY Pearl
12 3/8" x 22 1/2" - 31.5x57 cm



FRAY Stripe Warm
12 3/8" x 22 1/2" - 31.5x57 cm

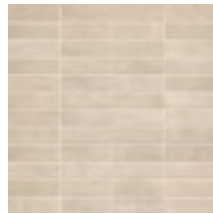


FRAY Stripe Cold
12 3/8" x 22 1/2" - 31.5x57 cm

MOSAICS



FRAY White Mosaic
12" x 12" - 30.5x30.5
(Mosaic 1" x 3") cm



FRAY Sand Mosaic
12" x 12" - 30.5x30.5
(Mosaic 1" x 3") cm



FRAY Pearl Mosaic
12" x 12" - 30.5x30.5
(Mosaic 1" x 3") cm

COORDINATING TRIMS



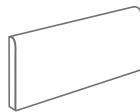
FRAY White



FRAY Sand



FRAY Pearl



Wall Bullnose
2" x 12 3/8" - 5x31.5 cm



Corner Line
1/2" x 12 3/8" - 1.5x31.5 cm



Every Atlas Concorde USA porcelain stoneware collection is PTCA Certified. Under the program, established jointly by the Porcelain Tile Certification Agency (PTCA) and the Ceramic Tile Distributors Association (CTDA), manufacturers can “prove” their product is really porcelain (meeting the water absorption criteria of the American national standard - ASTM C373).



LEED (Leadership in Energy and Environmental Design) is a rating system created to encourage the construction of “green” buildings. Developed by the US Green Building Council and internationally recognized, it points out the necessary requirements to build eco-compatible projects, capable of functioning in sustainable and autonomous way in terms of energy consumption as well as having a low environmental impact throughout their entire life-cycle. Atlas Concorde USA is a member of the US Green Building Council.



Atlas Concorde USA products are low-emitting materials with zero emission of volatile organic compounds (VOC). This can contribute to the awarding of 1 LEED credit.



Atlas Concorde USA is a member of TCNA, a trade association representing manufacturers of ceramic tile, tile installation materials, tile equipment, raw materials, and other tile-related products. The Tile Council is recognized for its leadership role in facilitating the development of North American and international industry quality standards to benefit tile consumers.



The Ceramic Tile Distributors Association (CTDA) is an international association of distributors, manufacturers and allied professionals of ceramic tile and related products. CTDA connects, educates and strengthens tile and stone distributors. Atlas Concorde USA is a member of CTDA.

WHITE BODY WALL TILES



Compliant with standards ANSI A137.1-2012

SIZE - THICKNESS

12^{3/8"} x 22^{1/2"} - 31.5x57 cm ± 8.5 mm

FINISH

MATTE



V1

FIELD TILES - Available in all colors

Nominal size (in)	Thickness (mm)	Finish
12 3/8" x 22 1/2"	8.5 mm	Matte

UNIFORM APPEARANCE

Differences among pieces from the same production run are minimal.

MOSAICS AND COORDINATING TRIMS - Available in all colors

	Nominal size (in)	Thickness (mm)	Finish
Mosaic 1"x3"	12" x 12"	8.5 mm	Matte
Wall Bullnose 2"x12"	2" x 12 3/8"	8.5 mm	Matte
Corner Line 1/2"x12"	1/2" x 12 3/8"	-	Matte

PERFORMANCE & FEATURES

	PROPERTY	ASTM TEST METHOD	Glazed Wall Tile Specification				FRAY Wall
			Calibrated		Rectified		
			Minimum	Maximum	Minimum	Maximum	
REGULARITY CHARACTERISTICS	Nominal Size	ASTM C499	-2.00%	2.00%	-2.00%	2.00%	Compliant
	Caliber Range (Variation from average facial dimension of sample)		-0.30% or -0.04 in (-1.0 mm) (*)	0.30% or 0.04 in (1.0 mm) (*)	-0.25% or -0.03 in (-0.8 mm) (*)	0.25% or 0.03 in (0.8 mm) (*)	Compliant
	Thickness (1)		N/A	Range: 0.031 in (0.79 mm)	N/A	Range: 0.031 in (0.79 mm)	Compliant
	Wedging	ASTM C502	-0.40% or -0.05 in (-1.3 mm) (*)	0.40% or 0.05 in (-1.3 mm) (*)	-0.25% or -0.03 in (-0.8 mm) (*)	0.25% or 0.03 in (0.8 mm) (*)	Compliant
	Warpage Edge	ASTM C485	-0.30% or -0.04 in (-1.0 mm) (*)	0.40% or 0.05 in (1.3 mm) (*)	-0.30% or -0.04 in (-1.0 mm) (*)	0.40% or 0.05 in (1.3 mm) (*)	Compliant
Warpage Diagonal	-0.30% or -0.05 in (-1.3 mm) (*)		0.40% or 0.07 in (1.8 mm) (*)	-0.30% or -0.05 in (-1.3 mm) (*)	0.40% or 0.07 in (1.8 mm) (*)	Compliant	
			All Glazed Wall Tile				
STRUCTURAL CHARACTERISTICS	Water Absorption	ASTM C373	≥ 10.0%				10% - 20%
BULK MECHANICAL CHARACTERISTICS	Breaking Strength	ASTM C648	Average ≥ 125 lbf. (1.11 kN) Individual ≥ 100 lbf. (0.44 kN)				≥ 175 lbf. avg
PHISICAL PROPERTIES	Bond Strength	ASTM C482	≥ 50 psi (0.34 Mpa)				≥ 100 psi
THERMAL AND IGROMETRIC CHARACTERISTICS	Crazing Resistance	ASTM C424	Pass				Resistant
	Thermal Shock Resistance	ASTM C484	Pass				Resistant
CHEMICAL CHARACTERISTICS	Chemical Resistance	ASTM C650	As Reported				Unaffected
	Stain Resistance	ASTM C1378	As Reported				Unaffected

(*) Whichever is less

(1) May not apply to textured surfaces or tiles with uneven back patterns.

COLORED BODY PORCELAIN STONEWARE



Compliant with standards ANSI A137.1-2012

SIZE - THICKNESS

11 3/4" x 23 5/8" - 30x60 cm ± 9 mm
23 5/8" x 23 5/8" - 60x60 cm ± 9 mm

FINISH

MATTE



V1

UNIFORM APPEARANCE

Differences among pieces from the same production run are minimal.

FIELD TILES - Available in all colors

Nominal size (in)	Thickness (mm)	Finish	Rectified edge
11 3/4" x 23 5/8"	9 mm	Matte	-
23 5/8" x 23 5/8"	9 mm	Matte	Yes

MOSAICS AND COORDINATING TRIMS - Available in all colors

	Nominal size (in)	Thickness (mm)	Finish
Mosaic 2"x2"	11 3/4" x 11 3/4"	9 mm	Matte
Tatami Mix Mosaic 1"x6"	11 3/4" x 11 3/4"	9 mm	Matte
Bullnose 3"x24"	2 7/8" x 23 5/8"	9 mm	Matte
Cove Base 6"x12"	5 7/8" x 11 3/4"	8.5 mm (*)	Matte

Please refer to caliber chart for work sizes.
Close joints are not recommended.
(*): Cove Base thickness is 7 mm on flat top part.

PERFORMANCE & FEATURES

	PROPERTY	ASTM TEST METHOD	Porcelain Tile Specification				FRAY Floor
			Calibrated		Rectified		
			Minimum	Maximum	Minimum	Maximum	
REGULARITY CHARACTERISTICS	Nominal Size	ASTM C499	-3.00%	3.00%	-3.00%	2.00%	Compliant
	Caliber Range (Variation from average facial dimension of sample)		-0.50% or -0.08 in (-2.0 mm) (*)	0.50% or 0.08 in (2.0 mm) (*)	-0.25% or -0.03 in (-0.8 mm) (*)	0.25% or 0.03 in (0.8 mm) (*)	Compliant
	Thickness (1)		N/A	Range: 0.40 in (1.02 mm)	N/A	Range: 0.40 in (1.02 mm)	Compliant
	Wedging	ASTM C502	-0.50% or -0.08 in (-2.0 mm) (*)	0.50% or 0.08 in (2.0 mm) (*)	-0.25% or -0.03 in (-0.8 mm) (*)	0.25% or 0.03 in (0.8 mm) (*)	Compliant
	Warpage Edge	ASTM C485	-0.75% or -0.09 in (-2.3 mm) (*)	0.75% or 0.09 in (2.3 mm) (*)	-0.40% or -0.05 in (-1.3 mm) ⁽²⁾ or -1.8 mm ⁽³⁾ (*)	0.40% or 0.05 in (1.3 mm) ⁽²⁾ or 1.8 mm ⁽³⁾ (*)	Compliant
Warpage Diagonal	-0.50% or -0.08 in (-2.0 mm) (*)		0.50% or 0.08 in (2.0 mm) (*)	-0.40% or -0.07 in (-1.8 mm) (*)	0.40% or 0.07 in (1.8 mm) (*)	Compliant	
			All Porcelain Tiles				
STRUCTURAL CHARACTERISTICS	Water Absorption	ASTM C373	≤ 0.5%				≤ 0.5%
BULK MECHANICAL CHARACTERISTICS	Breaking strength	ASTM C648	Average ≥ 250 lbf. (1.11 kN) Individual ≥ 225 lbf. (1.00 kN)				≥ 350 lbf. avg
PHISICAL PROPERTIES	Bond Strength	ASTM C482	≥ 50 psi (0.34 Mpa)				≥ 100 psi
THERMAL AND IGROMETRIC CHARACTERISTICS	Resistance to Freeze/Thaw Cycling	ASTM C1026	As Reported				Resistant
CHEMICAL CHARACTERISTICS	Chemical Resistance	ASTM C650	As Reported				Unaffected
	Stain Resistance	ASTM C1378	As Reported				Unaffected
SAFETY CHARACTERISTICS	Dynamic coefficient of friction	DCOF	Requires a minimum value of 0.42 for commercial areas that are likely to be wet				> 0,42 Wet

(*) Whichever is less
(1) May not apply to textured surfaces or tiles with uneven back patterns.
(2) Whichever is less, for tiles up to 24"x24" (610 mm x 610 mm).
(3) Applies to tiles larger than 24"x24" (610 mm x 610 mm).

Atlas Concorde reserves the right to modify any product without notice and will not be liable for any direct or indirect damage resulting from such modifications. Colors and optical features of the materials illustrated in this catalogue are to be regarded as mere indications. For information and details relating to codes, packaging and weight it is recommended to refer to the latest pricelist.

Atlas Concorde Usa, Inc.
117 Seaboard Lane - Suite 170
Franklin, TN 37067 - USA